

GREAT DAYS OUT

14
NEW TRIPS IN
2024

DAY TRIPS FROM SALISBURY TO TOWNS,
CITIES & ATTRACTIONS IN THE SOUTH OF
ENGLAND



HOME PICK UP AND DROP OFF SERVICE

(Door to Door service is only available from postal addresses within Salisbury City Limits)
(Additional designated pick up points for passengers living outside the City limits to meet the bus)

Booking office open from 09.00 - 16.30 Monday to Friday

01722 66 55 44

Whether you're young or old, whatever your interests are, there
will be a Great Day Out for you in this brochure!

WHO ARE GREAT DAYS OUT?

Great Days Out is a service operated by Arrowline Minibuses Ltd. We are a Salisbury company operating taxis and 8, 12 & 16 seater minibuses. We have been serving the local area since 2000 and since 2015 we have been providing an excursion program for those who enjoy getting out and about, but may not have the means to do so or who wish to have a more social day out with like-minded people with similar interests.

By using 16 seater minibuses we are able to take routes through narrow lanes and roads not accessible to larger buses, enabling you to see more of our beautiful countryside. Once at your destination we can usually drop you right at the door, again not accessible to coaches, also 16 passengers getting on and off is a lot quicker than waiting for 50 or so passengers attempting the same. The vehicles are modern with three-point seat belts, low steps and grab-rails for easy access and air-conditioning for passenger comfort.

We offer a door-to-door service, if geographically possible, and achievable within a reasonable time frame, we will pick you up from your road. This is a service only available to passengers living within the city limits. For those living further afield we will suggest the nearest pick-up point to your home on our pick-up route where we could meet you, having made your own arrangements to get to that point.

The service is for individuals and groups alike. Mums and Dad's why not take the kids on one of our outings to the seaside? Sons and daughters why not take Mum or Dad out for a change of scenery without you having to drive? We welcome enquiries from WI Groups, Bowling Clubs, Socials Clubs, Church Groups, Sports Clubs and Gardening Clubs.

If you would like to be kept informed of any additional trips we may offer, please provide us with your address and contact details and you will be the first to hear about them. You will also be the first to receive the new brochure when they are published.

HOW TO BOOK

To make a reservation for one of our excursions please email gdownwitharrowline@gmail.com or visit our website: www.salisbury-minibuses.co.uk click on the Great Days Out tab at the top of the page and then fill out the "contact us" form at the foot of the page. You can also book by telephone by calling 01722 66 55 44

PAYMENT

Please note that all reservations must be paid for at the time of booking. Bookings can only be accepted subject to availability. Payment can be made by cheque, credit/debit card, or bacs transfer (bank details will be given upon request). Please make cheques payable to Arrowline Minibuses Ltd, and send to Great Days Out, 13a Windsor Road, Salisbury, Wiltshire, SP2 7DX. Credit and debit card payments can be accepted by telephone and incur an additional £1.00 transaction fee per booking.

INDEX

MAY

Saturday 11th May - Stewarts Garden Centre **and Lyminster** 4

Tuesday 14th May - RHS Wakehurst Gardens 4

Thursday 16th May - Lulworth Cove **and Moreton** 4

Wednesday 22nd May - Hughenden Manor 4

Wednesday 29th May - Arundel (carpet of flowers) **or Chichester** 5

JUNE

Wednesday 5th June - Clarks shopping Village and **(optional visit to Glastonbury)** 5

Saturday 8th June - RHS Gardens Wisley 5

Tuesday 11th June - Weald and Downland Museum **or Chichester** 5

Thursday 13th June - Great Bedwyn Canal boat trip 6

Monday 17th June - New Forest Wildlife Park **and New Milton** 6

Wednesday 19th June - Bennetts Water Gardens **and Weymouth** 6

Tuesday 25th June - Kew Gardens 6

Saturday 29th June - Lyme Regis 7

JULY

Monday 1st July - Boat cruise from Poole to **Swanage with Steam Train journey** 7

Thursday 4th July - Sculpture by the Lakes **and Moreton** 7

Tuesday 9th July - Athelhampton House & Garden **and the Tolpuddle Martyrs Museum** 7

Wednesday 10th July - Bridport **and West Bay** 8

Tuesday 16th July - Marwell Zoo **or Winchester** 8

Thursday 18th July Exbury Gardens **& scenic New Forest drive** 8

Saturday 20th July - Knebworth House **and The Great British Food Festival** 8

Tuesday 23rd July - Brighton 11

Thursday 25th July - Swanage / Steam Railway 11

Tuesday 30th July - Brookwood Cemetery **and Guildford** 11

Wednesday 31st July - 42ND STREET @ The Bournemouth Pavilion 13

AUGUST

Tuesday 6th August - Sidmouth Folk Festival 13

Wednesday 7th August - Sidmouth Folk Festival **and (optional) Sidmouth Donkey Sanctuary** 13

Tuesday 13th August - Furzey Gardens **and Lyndhurst** 14

Thursday 15th August - Weymouth 14

Sunday 18th August - Camden Market **or London Zoo** 14

Tuesday 20th August - Lacock & **Abbey House Manor Gardens** 17

Thursday 22nd August - Cotswold Tour 17

Wednesday 28th August - Poppy Factory tour **and Kingston-Upon-Thames** 17

Thursday 29th August - Denbies Wine Estate 18

SEPTEMBER

Wednesday 4th September - Great Bedwyn Canal boat trip 18

Thursday 5th September - Oxford 18

Monday 16th September - Day trip to Guernsey from Poole 18

Thursday 19th September - The Craft4Crafters Show **or Wells** 19

Saturday 21st September - CIRQUE @ The Bournemouth Pavilion Theatre 19

INDEX

Tuesday 24th September - Highgate Cemetery tour and Long Acres Garden Centre	19	NOVEMBER	
Thursday 26th September - Buckingham Palace	21	Saturday 2nd November - Somerset Carnival, Bridgwater (with covered Grandstand seats)	24
Monday 30th September - Petworth House and Park	21	Tuesday 5th November - The National Gallery & National Portrait Gallery, London	25
OCTOBER		Saturday 9th November - Hampton Court Palace and/or Kingston upon Thames	25
Wednesday 2nd October - National History Museum at Tring	21	Thursday 14th November - Imperial War Museum and/or Tate Modern	25
Saturday 5th October - Bletchley Park (Home of the codebreakers)	21	Saturday 16th November - Portobello Road Market or the British Museum	26
Thursday 10th October - Alexandre Palace knitting and stitching show	22	Wednesday 20th November - Clarks shopping Village and (optional visit to Glastonbury)	26
Friday 11th October - Cirencester	22	Friday 22nd November - Waddesdon Manor Christmas Lights	26
Wednesday 16th October - Wells	22	Sunday 24th November - Gloucester Quays Victorian Christmas market	27
Thursday 17th October - Swindon Outlet Shopping Centre or Cheltenham	23	Thursday 28th November - Kew Christmas Lights	27
Tuesday 22nd October - LORD OF THE DANCE @ The Bournemouth Pavilion Theatre	23	DECEMBER	
Thursday 24th October - London Museums	23	Wednesday 4th December - Kew Christmas Lights	27
Wednesday 30th October - Marlborough and Hungerford	24	Friday 6th December - Longleat Christmas Lights	28
		Tuesday 10th December - Winchester Christmas Market	28

SOCIAL MEMBERSHIP

- 15% off drinks in the Clubhouse
- 10% off food in the Clubhouse
- Reduced hire rates on our Function Rooms
- Corporate Membership at Parkwood Health & Fitness
- Use of our Practice Facilities

Access to our Social Events & Functions throughout the year

Contact us on
01722 742645
for more information

Salisbury & South Wilts Golf Club



Saturday 11th May**STEWARTS GARDEN CENTRE AND LYMINGTON**

A beautiful, Georgian market town, Lymington is situated on the southern edge of the New Forest. The town is world renown as a sailing resort with a range of interesting independent shops including some designer boutiques, as well as the High Street Market on a Saturday. We will also stop at Stewarts Garden Centre, Christchurch. One of the largest Garden Centres in the area, it has a wonderful gift shop, coffee shop, aquatics centre and an Edinburgh Woollen Mill shop as well. You will return through parts of the picturesque New Forest.

Adult £29.00**Child £27.00****Also pick up points (H, I, J & K)****Pickups start 08.15 Home around 17.00****Tuesday 14th May****RHS WAKEHURST GARDENS**

Wakehurst is the sister botanic garden to Kew but in the heart of Sussex. Set in 500 acres of dramatic landscape, you will gaze upon beautiful ornamental gardens, temperate woodlands, striking valleys, vast meadows and wetlands as well as a nature reserve full of diverse wildlife.

Walk amongst great swathes of bluebells which carpet the woodland floors in May. **FYI entrance to Wakehurst: Adults £16.50 / Child: 16 or under: Free / National Trust members: Free.**

Adult £36.00**Child £34.00****Also pick up point (E, F & G)****Pickups start 08.15 Home around 18.00**

...If you do not live in our catchment pick up area (Salisbury), please see alternative pick up points on page 29.

Thursday 16th May**LULWORTH COVE AND MORETON**

Lulworth Cove is the jewel of the Jurassic Coast line. Here you will have time to take in the wonderful Dorset seascapes and rolling coastline, visit the souvenir shops and maybe have fish and chips or a crème tea by the sea. We will then end the day in the village of Moreton which is famous for its association with the prolific writer, celebrated soldier and archaeologist, T. E. Lawrence, better known as Lawrence of Arabia. Lawrence died in a motorcycle crash just outside Moreton and was buried in Morton churchyard. The church, "St Nicholas Church" is famous for its unusual etched glass windows, all of which were designed and engraved by Sir Lawrence Whistler. You will be able to wonder around the Church and also the Walled Garden opposite which is a beautiful five-acre landscaped formal garden with its own café and garden shop which stocks a huge range of plants for sale.

Adult £29.00**Child £27.00****Also pick up points (L & M)****Pickups start 08.15 Home around 17.30****Wednesday 22nd May****HUGHENDEN MANOR**

Hughenden, was the country home of Victorian Prime Minister Benjamin Disraeli, and more recently a top-secret map-making facility during the Second World War. However, there's almost a thousand years of history to uncover during your visit. Hughenden houses one of the world's greatest collections of art and historical objects. From great masterpieces to sculptures, there's something for every art lover to discover. You can also explore the vast gardens, parkland and pleasure grounds. **FYI entrance fees are: Adults £15.00 / Child: £7.50 / National Trust members: Free.**

Adult £36.00**Child £34.00****Also pick up point (A)****Pickups start 08.15 Home around 18.00**

Wednesday 29th May

ARUNDEL (CARPET OF FLOWERS) OR
CHICHESTER

Experience Arundel and you will discover more than you'd expect. As well as its famous landmarks, Arundel Castle and Arundel Cathedral, which dominate its impressive skyline, you also have many independent retailers, antique markets and art galleries. There is also the Arundel Museum and if the weather is nice, you can sit outside one of the riverside cafes, hire a boat on the boating lake or play crazy golf. On the 29th May there is also the famous Carpet of Flowers running the full length of the Cathedral as well as other floral displays around the Cathedral. If you would prefer to spend your day in Chichester you can be dropped off on route to Arundel.

Adult £31.00

Child £29.00

Also pick up points (E, F & G)

Pickups start 08.15 Home around 17.30

Wednesday 5th June

CLARK'S SHOPPING VILLAGE AND
(OPTIONAL VISIT TO GLASTONBURY)

Enjoy a fantastic day of shopping at Street, the home of Clarks Village Shopping Outlet. Clarks is renowned for its large selection of famous brand names at up to 60% off recommended retail prices. There are also many places to eat and drink and recharge your batteries. Don't forget the town of Street also has shops and places to eat. You may also if you wish spend a few hours in Glastonbury with its quirky shops, Abbey and famous Tor if shopping all day is not for you.

Adult £29.00

Child £27.00

Also pick up points (N, O & P)

Pickups start 08.15 Home around 17.00

Saturday 8th June

RHS GARDENS WISLEY

Wisley is the historical home of the RHS and is undoubtedly one of the great gardens of the world spawled over 200 acres and with over a million visitors to the garden each year. Visit the stunning Glasshouse (housing over 5,000 different varieties of tropical plant), Battleston Hill, Fruit Orchard, Rock Garden, Mediterranean Garden, Walled Garden, Rose Garden and Wildlife Garden to name but a few. The beauty and tranquillity of the garden captures the imagination, with its richly planted borders, luscious rose gardens and the exotica of the glasshouses. **FYI Admission fees: Adult £18.50 / Child £9.25 / RHS members: Free.**

Adult £36.00

Child £34.00

Also pick up point (A)

Pickups start 08.15 Home around 18.00

Tuesday 11th June

WEALD AND DOWNLAND MUSEUM OR
CHICHESTER

1,000 years of rural life in one remarkable open-air site. Discover rescued rural buildings set in a beautiful landscape, which tell the stories of the people who lived and worked in them. Explore the 40-acre site and visit more than 50 historic buildings, from a replica Anglo-Saxon Hall house to an Edwardian tin church. Enjoy a regular programme of demonstrations, including milling in a 17th century watermill; cooking in a Tudor kitchen; blacksmithing in a Victorian blacksmith's and baking in a bakehouse; plus, seasonal demonstrations. Take a walk in the woods, visit the waterside cafe or enjoy your own picnic. The museum is also the venue for the popular TV series "The repair Shop" which is set up in one of the historic barns. There is also an alternative option to visit Chichester for the day. **FYI entrance to the museum: Adults: £15.50 / Seniors (60+): £13.50 / Child: £7.50.**

Adult £31.00

Child £29.00

Also pick up point (E, F, G)

Pickups start 08.15 Home around 17.30

Thursday 13th June**GREAT BEDWYN CANAL BOAT TRIP**

Enjoy a leisurely day navigating the beautiful Kennet and Avon Canal on a wide beam canal boat. The boat has wide access boarding ramps and once on board with your friendly crew you will have all your home comforts. Should our great English weather let us down you will be able to sit inside which has central heating, a flushing WC and a fully equipped galley with a full-size cooker, fridge, crockery and cutlery etc. You will be looked after by a crew of three volunteers from the Avon and Kennet Canal trust who will encourage the entire group to have a go at steering and help those who would like to have a go at the locks! There will be no stops for lunch so we strongly recommend you take a pack lunch or food you can prepare in the galley. This same trip is running again on the 4th September. **The canal boat trip is included in the seat price.**

Adult £52.00**Child £50.00****Also pick up points (A, B & C)****Pickups start 08.15 Home around 17.30****Monday 17th June****NEW FOREST WILDLIFE PARK AND NEW MILTON**

The New Forest Wildlife Park is nestled in the beautiful woodlands of the New Forest. Enjoy following the woodland trails to see wallaby, European bison, wolves, wild boar, Scottish wildcats, lynx, foxes, pine marten, polecats, owls, ferrets and many more. Meet the friendly deer and watch the playful otters, including the endangered giant otter. Feeding sessions, keeper talks and special events are all year-round. We will then take a leisurely drive through the picturesque national park until we arrive at New Milton. There you can browse among the host of independent shops in the busy town centre with its wide, tree-lined pavements. There's also a large choice of cafés to suit all tastes, many with pavement terraces. **FYI entrance to the New Forest Wildlife centre: Adults £14.75 / Child: £11.25 / Seniors (60+) £13.75**

Adult £29.00**Child £27.00****Also pick up points (H, I, J & K)****Pickups start 08.15 Home around 17.00****Wednesday 19th June****BENNETTS WATER GARDENS AND WEYMOUTH**

Set in 8 acres, the gardens hold the National Plant Collection of Water Lilies with a Claude Monet style Japanese Bridge, Tropical House, Woodland Walks and Museum. Take a break at Café Monet which serves coffees, home-made lunches, cakes and cream teas then browse the shop for unusual gifts or plants for your garden. You may remain there all day whilst others may prefer to visit Weymouth as well, the choice is yours but that is an option. Weymouth is on one of the UK's most beautiful coasts, blessed with one of its sunniest and warmest climates and offers the best in an old-fashioned seaside resort with its sandy beaches and seafront amusements. **FYI entrance to Bennetts**

Water Gardens: Adults £11.50 / Child: £5.00.**Adult £29.00****Child £27.00****Also pick up points (L & M)****Pickups start 08.15 Home around 17.30****Tuesday 25th June****KEW GARDENS**

Kew Gardens are the most famous botanic gardens in the world. Their collection of living plants is also the largest and most diverse in the world. You will be inspired by the landscapes, be able to wonder through the glasshouses and historic buildings and see a vast range of rare and beautiful plants. You can also visit Kew Palace in the grounds of Kew Gardens which was originally a royal summer house but was turned into the home of Mad King George. **FYI Entrance fees are: Adults £22.00 / Child £6.00 4-15yrs. Discounted tickets are available on-line.**

Adult £36.00**Child £34.00****Also pick up point (A)****Pickups start 08.15 Home around 18.00**

Saturday 29th June**LYME REGIS**

Lyme Regis boasts breath-taking scenery and a special mystique, making it a sparkling resort for all seasons. Sometimes called the Pearl of the Jurassic Coast it is set in an Area of Outstanding Natural Beauty. Its historic Cobb and harbour are iconic features, set against moody blue cliffs yielding fossilised evidence of life on earth millions of years ago. With its sandy beach and quaint high street, it is the quintessential English seaside town. The town featured in the film *French Lieutenant's Woman* and more recently *Wonka*.

Adult £33.00**Child £31.00****Also pick up points (L&M)****Pickups start 08.15 Home around 18.00****Monday 1st July****BOAT CRUISE FROM POOLE TO SWANAGE WITH STEAM TRAIN RIDE**

You will arrive at Poole Quay to board the 10.30 Cruise from Poole Harbour to the Victorian seaside town of Swanage. On this 1-hour cruise with live commentary you will see some of Dorset's greatest landmarks, such as Brownsea Island, Sandbanks and Old Harry Rocks, as you head towards the historical seaside resort of Swanage. Your Boat Cruise ticket also includes a ticket to ride aboard the steam train from Swanage to Corfe or Norden, both stops offer free museums.

You could explore the ruins of Corfe Castle or enjoy the sights from one of the old pubs in the village. You will then be collected by the Minibus from Swanage at the end of the day.

FYI the Seatrains ticket prices are: Adults £25.50 / Child: £16.75. If you do not wish to ride the train, a one-way boat trip will be Adults £17.00 / Child: £9.50. We are also visiting Swanage by bus on Thursday 25th July.

Adult £29.00**Child £27.00****Also pick up points (H, I, J & K)****Pickups start 08.30 Home around 18.00****Thursday 4th July****SCULPTURE BY THE LAKES AND MORETON**

Nestled in 26 acres of Dorset's beautiful countryside lies Sculpture by the Lakes, an oasis for art lovers and collectors alike created by renowned sculptor Simon Gudgeon and his wife, Monique. Their vision was to create an environment for enthusiasts that blends nature's beauty with inspiring works of art free from the constraints of enclosed spaces of a traditional gallery. The sculpture park has been carefully landscaped and curated to ensure each piece is positioned to enhance its aesthetic qualities as well as the visual surroundings. For those who do not wish to spend the entire day at the Lakes they will have the option to make the short journey (5 minutes) to the small village of Moreton. For more information about Moreton please see the trip on Thursday 16th May. **FYI Entrance fee to the sculpture park is £15.00.**

Adult £29.00**Child £27.00****Also pick up points (L&M)****Pickups start 08.15 Home around 17.00****Tuesday 9th July****ATHELHAMPTON HOUSE & GARDEN AND THE TOLPUDDLE MARTYRS MUSEUM**

One of England's prettiest, and most important, medieval Tudor manor houses. Step back to 1485 and visit the historic Great Hall, then explore the 16 historic rooms. Wander through 20 acres of formal and architectural gardens with its newly restored kitchen garden. Enjoy a coffee or lunch in the Coach House Restaurant or book a table for an exclusive afternoon tea in the new Art Deco Tea Room. On our way home we will stop at the Tolpuddle Martyrs Museum. Here you will learn about the harrowing story of the Martyrs arrest, trial and punishment and how it led to the foundation of modern-day trade unions. **FYI Entrance to the House and Garden: Adults: £19.50 / Child: (12-17) £16.00 / Child: (5-11) £10.00. Online booking will be discounted by 10%.**

Adult £29.00**Child £27.00****Also pick up points (L & M)****Pickups start 08.15 Home around 17.00**

Wednesday 10th July**BRIDPORT AND WEST BAY**

Bridport is a thriving Market Town especially on Wednesdays when the market is operating. The market consists of a broad selection of traders lining the two main streets - plenty of choice supplemented by lots of independent shops and antique "warehouse" type premises which are full of items to browse as well as a large craft shop. Being right in the town centre you can also enjoy lunch in any one of dozens of cafes, bars and restaurants. After lunch we will travel just a mile to the south of Bridport to West Bay, a charming fishing village on the Jurassic Coastline. West Bay has enjoyed a surge in popularity in recent years whilst playing host to ITV's smash hit Drama Broadchurch starring David Tennant and Olivia Colman. It's not hard to see why the location was chosen, West Bay offers some stunning landscape to explore with breath-taking views from its dramatic coastline.

Adult £31.00**Child £29.00****Also pick up points (L&M)****Pickups start 08.15 Home around 17.30****Tuesday 16th July****MARWELL ZOO OR WINCHESTER**

Marwell Zoo is home to an incredible range of exotic and endangered species such as Amur Tigers, Snow Leopards and Pygmy Hippos. You will also see Giraffes, Penguins, Cheetahs, Rhino's, Meerkats, Hippo's, Tigers and much more. There are daily talks and shows as well as 140 acres of grounds and Gardens accessible by road and rail trains, as well as gift shops, cafes and picnic areas. Alternatively, you can visit Winchester. (See the trip on Tuesday 10th December for more details about Winchester). **FYI Entrance fees are: Adults: £25.18 / Seniors: £14.39 (60+) / Child: £21.58.**

Adult £29.00**Child £27.00****Also pick up points (E, F & G)****Pickups start 08.15 Home around 17.30****Thursday 18th July****EXBURY GARDENS AND SCENIC NEW FOREST DRIVE**

Visit Exbury Gardens, world famous for its collection of rhododendrons, azaleas, camellias, rare trees and shrubs, in the heart of the New Forest National Park. The gardens extend over 200 acres which can be explored by chauffeur driven buggy or Steam Railway (steam train/buggy rides are an additional £6.50pp payable to their ticket office on the day). There are Tea Rooms and a souvenir shop. We will also take a scenic drive through some of the beautiful New Forest villages after our visit. **FYI Entrance fees are: Adults £16.00 / Child £6.00.**

Adult £29.00**Child £27.00****Also pick up points (E, F & G)****Pickups start 08.15 Home around 17.00****Saturday 20th July****KNEBWORTH HOUSE AND THE GREAT BRITISH FOOD FESTIVAL**

Usually associated with the huge music festivals in the 80's & 90's, you may not know that this spectacularly beautiful Country House has over 500 years of fascinating history and 28 acres of formal gardens to offer. This weekend you will also have free entry to the Great British Food Festival showcasing a mix of national and regional producers offering homemade products, which you won't find in the supermarkets. As well as a well-known line-up of top chefs and bakers displaying their skills and sharing their knowledge throughout the day. **FYI Entrance to the House, Food festival, Gardens & Park is included in the price.**

Adult £55.00**Child £53.00****Also pick up point (A)****Pickups start 08.00 Home around 18.30**

A-Class Roofing & Construction Ltd

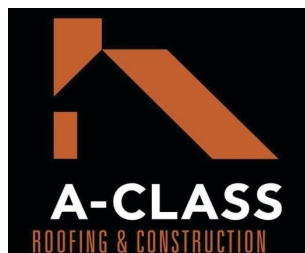
Unit 17, Harnham Trading Estate,
Salisbury SP2 8NW

Office: 01722 485910

Direct Line: 07964845340

Email: admin@a-classltd.co.uk

Website: a-classltd.co.uk



A Class Roofing and Construction LTD is an established local roofing and construction business based in Salisbury. Our team have over 100 years of roofing experience between them and are a well-known and respected business, serving Wiltshire, Hampshire and Dorset for the last 15 years.

We are fully licensed and insured and take pride in our work. Safety and professionalism are key to our values. We appreciate how important your home or business is to you and therefore ensure the same care and attention to detail is given to all our valued customers. We treat your property as if it were our own.




your Salisbury-based
roofing experts



Whether you're looking for roofing repairs, replacements or a brand-new rooftop, A-Class Roofing & Construction has got you covered



We cover all aspects of roofing and have an extensive knowledge of:

- EPDM Flat Roofing
- Plain tile, Pan tile, Peg Tile
- Natural and Composite slate tiling
- Conservation work, Grade I & II listed
- New Build, site work
- Re-roofing

And also undertake:

- Storm damage / repair work
- Leadwork
- Guttering
- Scaffolding

CONTACT US

17 Harnham Trading Estate, Salisbury SP2 8NW

01722 485910

simon@a-classltd.co.uk

www.a-classltd.co.uk

Our dedicated, hard-working team of 15 roofers and labourers are fully trained in all aspects of roofing. We pride ourselves on our customer service and endeavour to ensure your project is "stress free" from start to finish.

Please feel free to contact us on 01722 485910 for any more information or to arrange a free no obligation quotation.



STONEHENGE SCAFFOLDING LTD.

Stonehenge Scaffolding LTD is a local based Scaffolding company –with over 40 years extensive experience between us in scaffolding. We pride ourselves in providing high quality, safe scaffolding with outstanding customer service. We have a dedicated team who are able to measure up and draw the required scaffolding for your needs.

We are Based in Salisbury, Wiltshire but have recently installed Scaffolding in London (Lillie Street), Ringwood, Bournemouth, New Forest and Swindon area and therefore happy to travel to meet the needs of our clients – providing a free competitive cost.

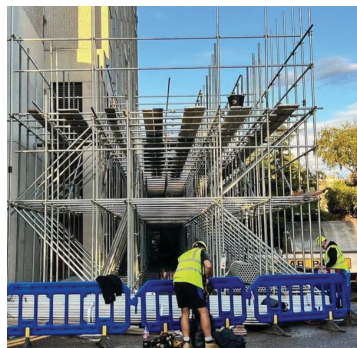
We try to work with our clients to make sure that all safety regulations are in place and that our scaffolding is designed correctly to meet the needs of the works being undertaken. Clients safety, well-being and expectations is our priority.

We can provide references if required and if you wish we can provide addresses of our projects for you to view for yourselves.

Call now on 01722 443855 for a free quotation or to discuss your project further and see how we can help you.

Office: 01722 443855

Email: Stonehenge_scaffolding@outlook.com



Tuesday 23rd July**BRIGHTON**

Brighton has everything you could wish for from a seaside town. Brighton pier has all the charm of years gone by, you can shop along the lanes, or take a ride on the Brighton Big Wheel and see for miles around. Close to the pier you will find the Sealife Centre, and just a short walk from the pier is the famous Brighton Pavilion. A new attraction is the British Airways i360 which is a 162-metre observation tower on the seafront of Brighton.

Adult £36.00**Child £34.00****Also pick up points (E, F & G)****Pickups start 08.15 Home around 18.30****Thursday 25th July****SWANAGE/STEAM RAILWAY**

Swanage is a small seaside town situated in the south east of Dorset. With award winning sandy beaches, beautiful countryside and its famous steam railway, it is a great day by the seaside. If you wish to travel on the Steam Railway your driver will be happy to drop you off at Norden station on route to Swanage, the train then takes you to Swanage via Corfe Castle, Harmas Cross and Herston stations.

Tickets for the Steam Railway are not included in this excursion price; an adult single fare from Norden to Swanage is

Adult: £12.00 / Child: £6.00.**Adult £29.00****Child £27.00****Also pick up points (L & M)****Pickups start 08.15 Home around 17.30**

...Remember there are only 16 seats available for each trip so please book early to avoid disappointment.

Tuesday 30th July**BROOKWOOD CEMETERY AND GUILDFORD**

Brookwood Cemetery is the largest cemetery in the United Kingdom and one of the largest in Europe. The cemetery was founded in 1852 to satisfy the demand for burial plots for the ever-increasing population of London and would hold over 3,500 burials per year on a site that was originally 2,268 acres. Only 220 acres remain today due to asset stripping throughout the 1950s. Such was the importance of this cemetery it had its own dedicated railway line from its own station next to Waterloo Station in central London. Passenger carriages were reserved for different classes and Hearse carriages for the coffins were also reserved for different classes. The train arrived in the cemetery from its own dedicated branch line. Amongst the War graves you will find the final resting place of twelve recipients of the Victoria Cross. There are also many Commonwealth graves, victims of the First World War, as well as an area allocated solely to the American's that fell in the first World War. After we have visited Brookwood, we will finish the day in Guildford with its cobbled High Street and three covered shopping centres which makes it one of the best shopping centres in Surrey.

Adult £36.00**Child £34.00****Also pick up points (A)****Pickups start 08.15 Home around 18.00**

...Ever thought of buying a trip as a present, we offer gift vouchers, then the recipient can choose the trip of their choice.

ALL PLASTERING WORK
UNDERTAKEN



Jorden Lowe
07881227546

EMAIL: jloweplastering@outlook.com

FREE QUOTATIONS:

- Dry lining
- Skimming
- Patch and Repair
- Rendering
- K Rend
- Overboarding ceilings

FULLY INSURED

John Jeffery of Salisbury

Established 1902

Residential and Commercial Agents
Residential Letting and Managing Agents

We are an independent, family run
business offering a professional
and friendly approach to all your
property requirements

42 Castle Street Salisbury SP1 3TT
Tel : 01722 335337
properties@johnjeffery.co.uk



The History Bookshop

*Offering a wide selection of quality secondhand
books on many aspects of history.*

Also available is a good selection of books for children.
A FREE booksearch service for out-of-print authors
and titles on any subject.

Fisherton Mill Courtyard
108 Fisherton Street
Salisbury, SP2 7QY

07772 632 517

patrickhillman@hotmail.co.uk

Opening Tuesday, Thursday, Friday & Saturday:
10.00am - 3.30pm



Sisters Wardrobe

Thrift and Consignment
Ladies Preloved
Clothing Shop

Highstreet to Designer

Consignments by booking only

44 Winchester Street

Salisbury SP1 1HG

hellosisterswardrobe@gmail.com

B&M
Windows & Doors Ltd

PVCu window and door repair specialists in the
Salisbury and surrounding area



For misted or broken double glazed units, replacement or
adjustment of window and door locks, handles and hinges

Call us for a free quotation on
01722 414655



B-CUTS AMESBURY

FAMILY RUN BARBERS
OPENING IN AMESBURY THIS
MONTH

WE WILL BE OPEN...

MON-WEDS: 9AM-6PM
THURS-FRI 9AM-7:30PM
SATURDAY 9AM-6:30PM
SUNDAY 10AM-4PM



FIND US

3 SALISBURY STREET, AMESBURY, SP47AW



Wednesday 31st July

42ND STREET @ THE BOURNEMOUTH
PAVILION THEATRE

42nd Street is the timeless and inspiring showbiz fairy tale that combines breath-taking tap dance routines, classic romance and delightful comedy. About a fresh faced, small-town but ambitious young lady called Peggy who arrives in New York City dreaming of her name up in lights. She eventually lands a part in the chorus line of Broadway's newest show... and when the leading lady gets injured, Peggy gets her shot at stardom. This iconic song-and-dance spectacular will have your toe-tapping and your hands clapping and is guaranteed to lift anyone's spirits. **The ticket for the show is included in the seat price.**

Adult £58.00

Child £56.00

Also pick up point (H, I, J, K)

Pickups start 17.00 Home around 22.30

Tuesday 6th August

SIDMOUTH FOLK FESTIVAL

With its beaches, stunning coastal walks, the beautiful Connaught gardens, stylish eating places, and some of the best shops in East Devon selling desirable items such as unusual gifts, designer clothing, and lifestyle goods, you have everything you need for a perfect day out. Sidmouth has all the charm of an unspoilt seaside town with a rich Regency History and over 500 listed buildings. You may wish to find out more about the town's history and connections at Sidmouth Museum housed in a delightful Regency cottage and is also the starting point for interesting town tours. The Sidmouth 10-day Folk Festival is also on and you will see and hear many bands playing in local pubs and on the streets with additional market stalls along the seafront selling unusual wares which remain for the duration of the festival. Please note that we will not be visiting the Donkey Sanctuary on this trip.

Adult £36.00

Child £34.00

Also pick up points (L & M)

Pickups start 08.15 Home around 18.30

Wednesday 7th August

SIDMOUTH FOLK FESTIVAL **AND**
(OPTIONAL) SIDMOUTH DONKEY
SANCTUARY

Please see details about Sidmouth from the trip on Tuesday 6th August. Today you also have the option to visit the Sidmouth Donkey Sanctuary although you may stay in Sidmouth for the entire day if you wish. The sanctuary is a working farm and home to hundreds of donkeys, mules and hinnies who have been rescued from mistreatment or relinquished into the charity's care. In the new Exhibition Barn, you can find out the vital lifeline donkeys provide for communities around the world. You can also visit the "Understanding Donkeys Zone" to learn everything you need to know about these wonderful animals. The sanctuary has a stunning new restaurant and sells a unique range of donkey-design items in their new Gift Shop. **FYI Entrance to the sanctuary is free.**

Adult £36.00

Child £34.00

Also pick up points (L & M)

Pickups start 08.15 Home around 18.30

...Why not use our trips to visit friends you rarely see that live in, or close to the town we are visiting.



Tuesday 13th August**FURZEY GARDENS AND LYNDHURST**

Furzey Gardens is an informal woodland garden nestled in a tranquil New Forest setting. The garden is well known for its riotous spring colour and stunning autumn leaves. The peaceful 10-acre woodland garden includes a wildflower meadow, quirky thatched structures, dozens of fairy doors, lake and a recreated gold medal winning RHS Chelsea show garden, as well as a charming thatched tea room serving drinks, cakes and light snacks. It is owned by the Minstead Trust who employ approximately 30 people with learning disabilities, assisted by around 20 volunteers. We will then take a leisurely drive through the national park to Lyndhurst which is the largest village in the New Forest. Here you will find the New Forest Centre which is home to the New Forest Museum, Gift Shop, Reference Library and Visitor Information Centre. The museum gives a unique insight into the Forest's history and heritage. Lyndhurst also has a wide range of tea rooms, pubs, restaurants and independent shops. **FYI Entrance to Furzey Gardens: Adults £9.00 / Child: £5.00 / RHS members: Free.**

Adult £29.00**Child £27.00****Also pick up points (E, F, G)****Pickups start 08.15 Home around 17.00****Thursday 15th August****WEYMOUTH**

Weymouth is on one of the UK's most beautiful coasts, and blessed with one of its sunniest and warmest climates, Weymouth offers the best in an old-fashioned seaside resort. Sandy beaches and seafront amusements and Thursday is market day in Weymouth so you should have plenty to see and do.

Adult £29.00**Child £27.00****Also pick up points (L & M)****Pickups start 08.15 Home around 17.30****Sunday 18th August****CAMDEN MARKET OR LONDON ZOO**

Camden Market is housed in what used to be stabling for an estimated 700 to 800 horses that worked at the Camden Goods Depot. Now it houses one of the most famous markets in the world. Combined with Camden Lock, part of the historic Camden Market, there are hundreds of unique shops, stalls, bars, cafes and food outlets selling every conceivable food from every corner of the world. Part of its charm is the historic setting and many original features of the stables have been maintained. Alongside the Market is Camden lock where you can take a boat or gondola ride along the canal. The alternative option on the day is a visit to London Zoo which is a short distance from Camden Town. We will drop off those passengers wishing to visit the Zoo before we reach Camden then pick them up at the end of the day. There is so much to see and do at the Zoo that it is not possible to list here, but the main attractions are, Land of the Lions, African Bird Safari, Butterfly Paradise, Rainforest Life, Penguin Beach, Gorilla Kingdom, Meet the Monkeys, Fruit Bat Forest, Tiger Territory, Reptile House, the Aviary and the Aquarium. Other interesting animals such as Meerkats, Pygmy Hippo's, Galapagos Tortoises, Lemurs and Komodo Dragons are amongst the other attractions on the day. **FYI Entrance fees to London Zoo are: Adults: £33.00 / Seniors (+65): £29.70 / Child: £23.10 (Tickets must be brought online in advance).**

Adult £36.00**Child £34.00****Also pick up point (A)****Pickups start 08.30 Home around 18.30**

...Don't leave booking your Christmas trips to late as there are only 16 seats, they are very popular and may sell out quickly.

NOW IS THE TIME TO MOVE TO MONUMENT PLACE, SALISBURY



**85%
SOLD**



Welcome Wednesday! You're invited to our coffee mornings every Wednesday from 10am.

RSVP today, call 0800 310 0992.

When you're ready to move to one of our stunning apartments at Monument Place, with Smooth Move, we'll help with the move and cover some of your moving costs*.

- Exclusively for the over 70s
- 1 and 2 bed apartments
- Buy from £349,000#
- Rent from £2,750# pcm

Monument Place, Endless Street, Salisbury, Wiltshire, SP1 3GE

To book your viewing, call **0800 310 0992** or search McCarthy Stone Salisbury.

McCARTHY STONE

Life, well lived

*Ts&Cs apply. See mccarthystone.co.uk/smoothmove for full details. #Subject to availability. Imagery is representative and facilities vary by location.

ANGELA Holidays

UK & Continental
coach holidays,
short breaks,
sea & river cruises

Come and join the Angela family.

We are a fully bonded family operated company based in Bursledon, Southampton who have been serving the south since 1953 offering UK and Continental breaks since 1968.

A reputation for excellence is what has served the company wonderfully well throughout its history from the office staff through to the experienced tour drivers. Our team are determined to not only maintain but to reach even greater heights.

Call us or visit our website to view our current Summer or Winter brochures, alternatively you are welcome to visit us at our office in Bursledon.

ANGELA
Holidays
2024 SUMMER APRIL - OCTOBER

ANGELA
Holidays
WINTER
NOV 2024 - MARCH 2025

**UK & CONTINENTAL
COACH HOLIDAYS
& SHORT BREAKS**

Sit back, Relax and Enjoy

YOUR FIRST CHOICE FROM THE SOUTH SINCE 1968

CTA
ABTOT
ATC

Don't delay book
today, Sit back,
relax and enjoy!

www.angelaholidays.co.uk T: 023 804 04536

Tuesday 20th August**LACOCK AND ABBEY HOUSE GARDENS,
MALMSBURY**

Lacock is a quintessential English village owned almost in its entirety by the National Trust who maintains its unspoiled appearance. Its picturesque streets and historic cottages, untouched by modern alterations are the reason many TV series have been filmed there in recent years including 'Downton Abbey', 'Pride and Prejudice', 'Cranford', and the films 'Harry Potter and the Half-Blood Prince' and 'Wolfman'. You will see quaint cottages, the old workhouse, the medieval tithe barn, the old lock-up and the village church. We will also visit Abbey House Manor Gardens, Malmesbury which was once part of the Benedictine Monastery founded around 666AD. For the past twenty years it has been developed and restored to create 5 acres of beautiful formal landscaped gardens where over 2,000 roses can be found. Paths lead you down to the bottom garden where there are shade loving plants, specimen trees and shrubs. Walk along the river where you might be lucky enough to see Kingfishers and other wildlife. Just 200 yards away is Malmesbury Abbey where King Athelstan, the first King of England was buried.

FYI Entrance fees for the Abbey Gardens are: Adults £8.00.

Adult £33.00

Child £31.00

Also pick up point (N)

Pickups start 08.15 Home around 18.00

...If you are a member of a group or association that wishes to organise their own trip, itinerary and choice of destination, we will be happy to quote.

Thursday 22nd August**COTSWOLD TOUR**

Our tour of the Cotswolds will include a stop in one of the prettiest villages in England, Bourton-on-the-Water, with beautiful bridges over the river Windrush, the village is known as "Venice of the Cotswolds." There is plenty to see and do with a wealth of attractions and shops, restaurants and tea rooms. We will also visit the pretty Cotswold village of Burford known for its beauty and history but also for its shopping, especially antiques.

Adult £36.00

Child £34.00

Also pick up points (A, B & C)

Pickups start 08.15 Home around 18.30

Wednesday 28th August**POPPY FACTORY TOUR AND KINGSTON
UPON THAMES**

Our day will start with a two-hour tour of the Poppy Factory in Richmond, where over 12 million poppies and 135,000 remembrance wreaths are made each year for Remembrance Day. On the tour you will enjoy a fascinating presentation and introductory film about the factory and its history. You will then move through to the museum area where you get to make a poppy and see some of the wreaths and poppies that have been made throughout history. We will then visit Kingston-Upon-Thames. With 2 large shopping malls, a colourful market place as well as a booming and vibrant independent scene, you will have plenty to do and see. The poppy Factory Tour is optional. **FYI Entrance fees for the Poppy Factory are: Adults £14.00.**

Adult £33.00

Child £31.00

Also pick up points (A)

Pickups start 07.30 Home around 18.00

Thursday 29th August**DENBIES WINE ESTATE**

One of England's largest single estate vineyards, set on 265 acres of Surry's North Downs. Your day will start with a 50-minute vineyard train tour which takes visitors at a leisurely pace to some of the most beautiful viewing points in the vineyard. A recorded commentary will enhance your trip making it an informative and comfortable way to experience the magnificent panoramic views of the Denbies Estate. After a break for lunch, you will be taken on an indoor tour starting with a 20-minute film in the cinema, followed by a tour of Denbies cellars where you will be guided through three of Denbies classic wines (as well as tasting) with one of the Wine Experts. There are also various restaurants and a café, a wine and gift shop, Art Gallery and Farm Shop. **The indoor and outdoor tours are included in the seat price.**

Adult £60.00**Also pick up point (A)****Pickups start 07.30 Home around 17.30****Wednesday 4th September****GREAT BEDWYN CANAL BOAT TRIP**

Please see details from the trip on Thursday 13th June.

The canal boat trip is included in the seat price.

Adult £52.00**Child £50.00****Also pick up points (A, B & C)****Pickups start 08.15 Home around 17.30****Thursday 5th September****OXFORD**

Oxford is best known for its university, which consists of 39 colleges dotted around the city. The colleges range from 50 to 750 years old. Many of which are open to the public. There are many museums and places of architectural beauty along with a vibrant town centre with its many antique and book shops. You may wish to dine in one of Oxford's many eateries or even take a punt or gondola down the river.

Adult £31.00**Child £29.00****Also pick up point (A)****Pickups start 08.15 Home around 17.30**

5 RIVERS
Indoor Bowls Club
www.fiveriversibc.com

EVERYONE WELCOME
All abilities and ages (8+)

TRY INDOOR BOWLS AT OUR 2024 FREE OPEN DAYS

Friday 27th Sept 2-6pm & Saturday 28th Sept 2-5pm
Tollgate Road, Salisbury SP1 2JJ

No need to book
Call to find out more:
0797 465 1453
enquiries@fiveriversibc.com
www.fiveriversibc.com

Monday 16th September**DAY TRIP TO GUERNSEY FROM POOLE**

Discover the beauty of the Channel Islands with a day trip to Guernsey. We will drop you off at the Condor Trimaran high-speed service terminal in Poole at 09.45 for your 10.30 departure. You will arrive in St Peter Port, Guernsey at 13.30. St Peter Port is considered one of Europe's prettiest harbour towns; explore its history and heritage, the town has a fantastic range of attractions including museums, a castle and vibrant squares with informal cafes and quaint boutiques where you can enjoy tax free shopping. Spend four leisurely hours seeing the sights and soaking up the slow-paced way of life before returning to the ship, where you can enjoy genuine duty-free savings on all your favourite brands of wine, beer, spirits, beauty products, fragrances, gadgets and gifts. As you are only on the Island for 4 hours there will be no time to sight see by bus so the minibus will drop you off at Condor's site in Poole and you will travel as foot passengers. The return crossing will leave at 17.40 and you will arrive back in Poole at 20.40. The return catamaran ticket is included in the seat price.

Adult £70.00**Child £68.00****Also pick up point (I, J & K)****Pickups start 07.30 Home around 22.00**

Thursday 19th September**CRAFT 4 CRAFTERS SHOW OR WELLS**

The Craft 4 Crafters show at Shepton Mallet show ground has over 100 national and local businesses all under one roof. With a large range of the latest crafting supplies, from Stitching, Knitting, and Felting to Paper Craft, Jewellery, and Dress making. The exhibition offers you a chance to purchase all your essential Hobby & Needle craft supplies as well as workshops, live demonstrations, designers, competitions and display galleries. Pick up or brush up on your skills and get involved in the trend of Make, Do & Mend. Alternatively, you can visit Wells. Please see details from our trip to Wells on Wednesday 16th October.

Adult £29.00 Child £27.00

Also pick up points (N, O & P)

Pickups start 08.15 Home around 17.00

Saturday 21st September**CIRQUE @ THE BOURNEMOUTH PAVILION THEATRE**

It's time to step into the light. Where Musical Theatre meets the Circus. You will be treated to the very best musical theatre showstoppers and some jaw-dropping, spectacular circus acts. An explosion of colour, where West End and Broadway hits combine with amazing aerialists, incredible contortionists, and thrilling feats of agility and bravery. Roll up, roll up for an unforgettable night out in the extraordinary world of Cirque. **The ticket for the show is included in the seat price.**

Adult £70.00

Child £68.00

Also pick up point (H, I, J, K)

Pickups start 17.00 Home around 22.00

Tuesday 24th September**HIGHGATE CEMETERY TOUR AND LONGACRES GARDEN CENTRE**

Our trip today will start at Longacres Garden Centre, Bagshot which is an ideal halfway stop off point to break up the journey. Longacres has everything you would expect from a garden centre and is similar to a Haskins centre in size and quality. The Greenhouse Café offers a full menu, snacks, cakes and Crème Teas. We will then head to Highgate Cemetery where you will be taken on a guided tour of the West side of the Cemetery. With its sinuous paths winding around ivy-clad monuments, Highgate Cemetery West is a secluded funerary landscape at its most evocative. It is home to the most impressive architectural features of Highgate Cemetery – the chapel, colonnade, Egyptian Avenue, Circle of Lebanon (the location for many films past and present) and the wonderful mausoleum of Julius Beer. Guides regale groups with stories of characters buried in the cemetery, explain the history and background and lead them into the atmospheric Terrace Catacombs, which can only be visited on a guided tour. You can also explore the East side of the cemetery where famous actors, artists, writers and performers are buried as well as those active in politics or philosophy – Karl Marx, being the best known of these. The guided tour price is included in the seat price.

Adult £54.00

Child £50.00

Also pick up point (A)

Pickups start 08.15 Home around 18.30

...If a tour is oversubscribed, we will endeavour to offer another date to the same destination to satisfy demand.



New Garage

HARNHAM Ltd
01722 321330

VEHICLE WIDE DIAGNOSTICS
WHATEVER THE PROBLEM,
WE HAVE THE SOLUTION



HIGHLY TRAINED
TECHNICIANS



WELDING



OIL & BRAKE
CHECKS



BREAKDOWN
SERVICE



TYRE REPAIRS



BATTERY CHANGE

RAC
Approved Garage



NEW GARAGE (HARNHAM)
28/30 HARNHAM TRADING ESTATE
SALISBURY
WILTSHIRE
SP2 8NW

Thursday 26th September**BUCKINGHAM PALACE**

The highlight of a visit to Buckingham Palace, the official London residence of His Majesty The King are the State Rooms. The public rooms in the Palace where the King and members of the Royal Family receive and entertain their guests on State visits. There are 19 State Rooms, the most prominent of which are the WHITE DRAWING ROOM, THE THRONE ROOM, THE BALLROOM and MUSIC ROOM. Then there is the amazing GRAND STAIRCASE and THE PICTURE GALLERY. You will also have 16 hectares of Royal Gardens to explore, best known as the setting for royal garden parties.

The Palace entrance ticket is included in the seat price.

Adult £68.00

Child £66.00

Also pick up point (A)

Pickups start 08.15 Home around 18.30

Monday 30th September**PETWORTH HOUSE AND PARK**

Inspired by the spectacular palaces of Europe, Petworth House has amazing grand state rooms designed to display wealth, taste and royal connections. These rooms were never intended for everyday living so you'll find few domestic furniture arrangements; instead, the opulent rooms display one of the finest art collections in the care of the National Trust. In contrast to that opulence are the Servants' Quarters which have changed little since Victorian times. These quarters accommodated around 40 live-in servants, who were needed to support the large estate. Petworth is also considered one of the best surviving examples of Capability Brown's landscapes which can be seen in the 700 acres of deer park. A short distance from the house is the town of Petworth. It is a treasure trove of independent boutiques, cafes, restaurants and is famous for its antiques and arts establishments with around 37 of them all within a half-mile radius. **FYI entrance fees are: Adults £19.00**

Child: £9.50 National Trust members: Free.

Adult £33.00

Child £31.00

Also pick up point (E,F&G)

Pickups start 08.15 Home around 18.00

Wednesday 2nd October**NATIONAL HISTORY MUSEUM AT TRING**

The sister museum to the Natural History Museum in London. The museum at Tring has almost 5000 exhibits and is one of the largest private collections of natural history specimens in the world which were amassed by the 2nd Baron, Walter Rothschild. All set-in modern galleries in Rothschilds family mansion originally designed by Sir Christopher Wren in the 1680s. Entry is free but a donation is appreciated.

Adult £36.00

Child £34.00

Also pick up point (A)

Pickups start 08.15 Home around 18.30

Saturday 5th October**BLETCHLEY PARK (HOME OF THE CODE BREAKERS)**

This is an amazing day out, where you will be in awe of the incredible people that worked in secret at Bletchley Park. Known as the home of the code breakers and where Colossus, the world's first electronic computer was built to help decipher the Lorenz-encrypted (Tunny) messages sent via the Enigma machine between Hitler and his generals during World War II. The work done at this site was a huge contributing factor which helped bring an end to the Second World War. A truly thought-provoking day out. **FYI Entrance fees on the day are. Adults: £25.50 / Seniors: (60+) £23.00 / Child: £17.00 (12-17) under 12's free.** **Book online for a 10% discount on these prices.**

Adult £36.00

Child £34.00

Also pick up points (A)

Pickups start 08.15 Home around 18.00

Thursday 10th October**KNITTING AND STITCHING SHOW AT
ALEXANDRA PALACE**

This is the knitting, stitching and craft show of the year offering nearly 400 exhibitors selling essential supplies and craft materials. Whether you want knitting yarn and accessories, fabric, sewing machines or embroidery threads you'll find all the knitting supplies and craft products you can think of. There are also around 250 of the leading specialist craft supplier's workshops teaching you to dress make, knit, crochet, sew, quilt and more, or to help brush up on skills you already have. **FYI entrance fees are: Adults £19.00 Child: £9.50.**

Adult £36.00**Child £34.00****Also pick up point (A)****Pickups start 08.15 Home around 19.30****Friday 11th October****CIRENCESTER**

Known as the capital of the Cotswolds because it lies at the heart of this beautifully and quintessentially English district, Cirencester is a traditional Cotswold market town. It has many independent shops and seriously good restaurants and cafés. Its market square is dominated by the cathedral-like Parish Church of St. John Baptist (one of the largest in England with its 162ft (49m) high tower which is the tallest Church tower in the county). There is a weekly Antiques & Collectors' Market in Cirencester's Corn Hall every Friday as well as a street market.

Adult £32.00**Child £30.00****Also pick up points (A, B & C)****Pickups start 08.15 Home around 17.30**

*...If you wish to receive our 2025
brochure please call:
01722 66 55 44*

Wednesday 16th October**WELLS**

Wells is a medieval city nestling on the southern side of the Mendip Hills. It is the smallest city in England with about 12,000 inhabitants. Famous for its 13th century Cathedral, it remains remarkably unspoilt and has many other historic buildings including the moated Bishop's Palace, Vicars' Close, St Cuthbert's Church and a good local museum. The Market Place has lively markets twice a week, narrow streets and an eclectic mix of building styles which reflect the continuing development of the town throughout the ages. Wednesday is market day.

Adult £30.00**Child £28.00****Also pick up points (N, O & P)****Pickups start 08.15 Home around 17.30**

Thursday 17th October**SWINDON OUTLET SHOPPING CENTRE OR
CHELTENHAM**

McArthurGlen's Designer Outlet is housed in some of the beautifully renovated Grade II listed buildings of the Great Western Railway and is one of the largest covered Designer Outlets in Europe. A quality mix of High Street and Designer brands, reduced by up to 60%. With over 90 top name stores, including fashion brands Reiss, Joules, Hobbs, Ted Baker, Calvin Cline and Tommy Hilfiger. Also, High Street favourites Marks & Spencer and John Lewis Home have outlets along with Yankee Candle, Le Creuset and many more. After all that shopping you will be able to choose from a variety of restaurants offering different dining options. If shopping is not your thing, then there is also the Great Western Railway Steam Museum on the same site. **FYI Entrance to the Railway Museum is Adults: £12.45 / Seniors: (65+) £10.00 / Child: £9.25 (3-15) under 3's free.** Alternatively, you can visit Cheltenham, an elegant town, where many of the regency, architectural and heritage features can still be seen today, with the town maintaining much of its original culture. The Brewery Quarter is a buzzing district where old meets new with many bars and restaurants. It also has excellent, High-Street shops and independent shopping quarters, and the John Lewis flagship store in the former Beechwood Centre. Close to the city centre is the Brennen and Brown Gin Distillery, along with many theatres and entertainment venues. Cheltenham is a hive of culture and activity to suit every generation.

Adult £33.00**Child £31.00****Also pick up points (A, B & C)****Pickups start 08.15 Home around 18.00****Tuesday 22nd October****LORD OF THE DANCE @ THE
BOURNEMOUTH PAVILION THEATRE**

Now in its 27th year, Michael Flatley is back with a dazzling revival of his iconic Lord of The Dance extravaganza. Having been seen by over 60 million people in 60 countries on every continent it is one of the most successful productions in the history of entertainment. You may have seen this show before but the new 2024 shows have been rejuvenated with new staging, fresh choreography, new costumes, cutting-edge technology, and special effects lighting which will leave you spellbound. **The ticket for the show is included in the seat price.**

Adult £76.00**Child £74.00****Also pick up point (H, I, J, K)****Pickups start 17.15 Home around 22.30****Thursday 24th October****LONDON MUSEUMS**

Although billed as a trip to London's Museums you can in fact do as you wish as long as you meet the bus at the designated time. We will however be dropping off and picking up from **The Natural History Museum** exhibits a vast range of specimens from various segments of natural history.

The Victoria and Albert Museum is the world's largest museum of decorative arts and design, housing a permanent collection of over 4.5 million objects.

Science Museum Interactive and thought-provoking, the Science Museum is a great place to see, touch and experience science first-hand. From space travel to psychology, there's something for all the family.

The best bit of all is that all of these wonderful Museums are Free to enter.

Adult £36.00**Child £34.00****Also pick up point (A)****Pickups start 08.15 Home around 18.30**

Wednesday 30th October**MARLBOROUGH AND HUNGERFORD**

The morning will be spent in the beautiful, historic town of Marlborough. Where many big-name chain stores line the extra wide High Street, or just off it in quirky side arcades. Fashion stores such as Jigsaw, Dorothy Perkins, Monsoon, Dash, Crew, Phase Eight and White Stuff, plus there's an extensive choice of highly individual shops selling all kinds of merchandise, gifts and jewellery. Wednesday is also market day in Marlborough. In the afternoon we will take the 15-minute journey to Hungerford which is surrounded by an area of outstanding natural beauty. Take a stroll around the town, where you will find an array of independent and specialist shops offering Antiques, fashion and furnishings, crafts and artisan products. There are also many cafés, restaurants, pubs and hotels to enjoy.

Adult £29.00**Child £27.00****Also pick up points (A, B & C)****Pickups start 08.15****Home around 17.00****Saturday 2nd November****SOMERSET CARNIVAL, BRIDGWATER
(WITH COVERED GRANDSTAND SEATS)**

Bridgewater Carnival is the UK's oldest carnival and one of the largest illuminated carnival processions in Europe, often said to be one of the most exciting displays of amateur entertainment anywhere in the world. The ingenuity and design skills of the carnival clubs will take your breath away. With over one hundred giant Carnival floats passing before your eyes over a 2-mile route, each one pulsating with music and aglow with the lights from thousands of coloured light bulbs. Each float is the result of a whole year's work by volunteers and tradesman representing their local carnival club, so there is a great deal of rivalry between clubs to produce the winning float. All proceeds go to charities. The parade starts at 18.00 but you will have plenty of time before to explore Bridgewater and watch Street Entertainment which starts at 10.30 on carnival day. **FYI The price includes a covered Grandstand seat so you will have the very best view of the possession and be relaxed and dry.**

Adult £67.00**Child £65.00****Also pick up points (N, O & P)****Pickups start 13.00 Home around 22.00**

...Ever thought of buying a trip as a present, we offer gift vouchers, then the recipient can choose the trip of their choice.

Tuesday 5th November**THE NATIONAL GALLERY & NATIONAL PORTRAIT GALLERY, LONDON**

This exceptional Art Gallery has an outstanding collection of painting from the world's most famous artists. Masterpieces from Jan van Eyck, Hans Holbein, Vincent Van Gogh, JMW Turner, Leonardo Da Vinci, Diego Velázquez, Titian, Constable, Botticelli, Monet, Caravaggio and Vermeer to name but a few. **Alternatively, you may wish to visit the National Portrait Gallery** or both as they are within minutes of each other. The National Gallery is in Trafalgar Square in the heart of London, so if galleries are not your cup of tea, you are only a short distance from other famous landmarks and attractions such as Covent Garden, Leicester Square and Buckingham Palace. **Entrance to both the Galleries is FREE.**

Adult £36.00**Child £34.00****Also pick up point (A)****Pickups start 08.15 Home around 18.30****Saturday 9th November****HAMPTON COURT PALACE AND OR KINGSTON UPON THAMES**

With over 500 stores, 2 shopping malls, a colourful market place as well as a booming and vibrant independent scene, it's no wonder Kingston is the third biggest shopping destination in London. Alternatively, you can visit Henry VIII's favourite royal residence Hampton Court. Immerse yourself in the sights and sounds of the bustling Base Court and marvel at the breath-taking grandeur of Henry's State Rooms. Explore the vast Tudor kitchens, stroll through over 60 acres of gardens, lose yourself in the famous maze and appreciate the beauty of one of the greatest Palaces on earth. If you creep along the Haunted Gallery, you will discover another Palace, the Baroque Palace from the Stuart and Georgian era. Audio guides are included in the palace ticket and costumed tours and talks happen daily, as well as an excellent programme of seasonal events. **FYI Admission fees to the Palace are: Adult: £30.00 / seniors: (+65) £24.00 / Child: (5-15) £15.00.E.**

Adult £36.00**Child £34.00****Also pick up point (A)****Pickups start 08.15 Home around 18.30****Thursday 14th November****IMPERIAL WAR MUSEUM AND TATE MODERN**

The Imperial War Museum is the world's leading museum of war. It first opened its doors during the First World War. With six floors, the museum is vast. Each floor has a story to tell, stories of the extraordinary experiences of ordinary people forced to live their lives in a world torn apart by conflict. With a wealth of objects - from uniforms to photographs, vehicles to films, weapons to works of art. You will have plenty to see in the world-famous atrium where you experience the continuing influence of war on the world, from the First World War to present day in the award-winning galleries. **Alternatively, you could visit Tate Modern** which is one of London – if not the world's - most iconic art galleries. Along with their permanent collection (featuring big names including Pablo Picasso, Henri Matisse, Yayoi Kusama and Barbara Hepworth), you will see works of art from artists such as Cézanne, Bonnard, Rothko, Dalí, Pollock, Warhol and Bourgeois. Become one of the 5 million visitors that enjoy all that this iconic former Bankside Power Station has to offer. The best bit of all is that all of these wonderful Museums are Free to enter.

Adult £36.00**Child £34.00****Also pick up point (A)****Pickups start 08.30 Home around 19.00**

Saturday 16th November**PORTOBELLO ROAD MARKET OR THE BRITISH MUSEUM**

Portobello Road is the world's largest antiques market with over 1,000 dealers selling every kind of antique and collectable. Visitors flock from all over the world to discover one of London's best loved landmarks. Portobello is really several markets in one, Saturday being the day when all are in full swing. Then you can experience a mile of hustle, haggle, colour and energy. The feature of Saturdays is the opening of hundreds of antique and specialist shops and stalls.

There are some talented and bizarre street performers to be spotted too. **Alternatively, you could visit The British Museum** which is dedicated to human history, art and culture. Its permanent collection of eight million works is among the largest and most comprehensive in existence. It documents the story of human culture from its beginnings to the present. The British Museum was the first public national museum to cover all fields of knowledge.

Adult £36.00**Child £34.00****Also pick up point (A)****Pickups start 08.15 Home around 19.00****Wednesday 20th November****CLARK'S SHOPPING VILLAGE AND (OPTIONAL VISIT TO GLASTONBURY)**

See details about this trip also running on Wednesday 5th June.

Adult £29.00**Child £27.00****Also pick up points (N, O & P)****Pickups start 08.15 Home around 17.00****Friday 22nd November****WADDESDON MANOR CHRISTMAS LIGHTS**

Waddesdon Manor is an exquisite example of a French Chateau. It is now owned by the National Trust and houses a famous collection of eighteenth-century decorative arts. Together with important British, Dutch and French paintings, displayed in the magnificent interiors over three floors. It also houses a Wine Cellar where over 10,000 bottles of wine, are stored in vaults. This Christmas at Waddesdon, marvel at its tastefully decorated period rooms within the house and its dazzling light displays outside where the Manor façade will be projected onto telling various stories of Christmas. Also, outside you can browse over 80 hand-selected stalls in their Christmas market, housed in charming wooden chalets and surrounded by twinkling trees. Then when darkness falls follow the light trail through the Aviary gardens where music fills the air, and dazzling light displays make Christmas come alive. **FYI Entrance fees to the House and gardens at Christmas are: Adults £33.00 / National Trust members £15.00.**

Adult £36.00**Child £34.00****Also pick up point (A)****Pickups start 11.00 Home around 20.30**

Sunday 24th November**GLOUCESTER QUAYS VICTORIAN CHRISTMAS MARKET**

The market set against the splendid back drop of the City's historic docks features 150 stalls selling handmade gifts and the best food & drink the region has to offer. Wooden toys, artisan jewellery, homeware, fine clothes & accessories are all here in abundance. Browse, buy or enjoy a mulled wine and soak up the traditional festive atmosphere. Listen to live music including brass bands, choirs, buskers, and an old-time barrel organ, there is also a huge traditional carousel, children's art and craft activities, Victorian games, a Real Ale tavern, micro-brewery and the Waterways Museum. Gloucester Quays is also an outlet centre where keen shoppers can save up to 70% off well-known brand names. Add to this Gloucester town centre and Gloucester Cathedral and there is plenty to see and do.

Adult £36.00**Child £34.00****Also pick up points (A, B & C)****Pickups start 08.30 Home around 18.30****Thursday 28th November****KEW GARDENS, CHRISTMAS LIGHTS**

See the world-famous gardens in a completely different light. Follow the sparkling trail of over one million twinkling lights, illuminating heritage trees and buildings through the Gardens. Fairy tale meets fantasy in a world of singing trees, larger than life flora, ribbons of light, giant baubles, and a flickering Fire Garden. The Palm House leaps into life with a dazzling show of laser beams, jets of light and kaleidoscopic projections. See the UK's tallest living Christmas tree adorned with 1,800 white lights. The evening ticket allows entry between 17.00 and 22.00. **Admission to the gardens is included in the price.**

Adult £64.00**Child £62.00****Also pick up points (A)****Pickups start 14.00 Home around 22.30****Wednesday 4th December****KEW GARDENS, CHRISTMAS LIGHTS**

See details about this trip also running on Thursday 28th November.

Admission to the gardens is included in the price.

Adult £64.00**Child £62.00****Also pick up points (A)****Pickups start 14.00 Home around 22.30**

Friday 6th December**LONGLEAT SAFARI, HOUSE & CHRISTMAS LIGHTS**

Our day will start with a drive through the Safari Park. You will then have time to take a look at the Main Square Festive Attractions, wander around the formal garden or take a Boat Safari. In the afternoon you will be escorted on a guided tour of Longleat House. Step through the doors and be transported into this masterpiece of Elizabethan architecture beautifully decorated to enhance its magnificent, palatial rooms. As night falls walk amongst the lanterns that light up Longleat, along with a spectacular light show which takes place in the main square around a 50ft Christmas tree lit up by an interactive light display. **FYI Admission to the House, Safari Park and lights is included in the price.**

Adult £70.00

Child £60.00

Also pick up points (N, O & P)

Pickups start 10.15 Home around 19.00

Tuesday 10th December**WINCHESTER CHRISTMAS MARKET**

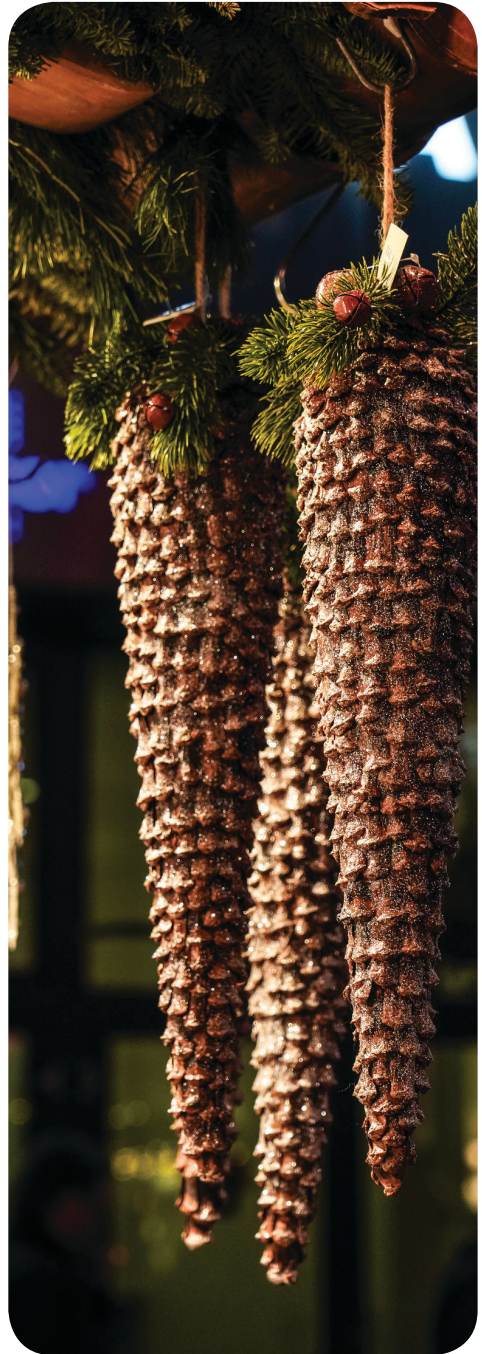
Winchester Christmas Market is recognised as one of the best in Europe, renowned for its unique location, high quality exhibitors and bustling atmosphere. Inspired by traditional German Christmas markets it sells wonderful Christmas gifts, decorations and festive foods. The pretty wooden chalets are situated in the Cathedral's historic Close surrounding an open-air real ice rink. All the exhibitors have been hand-picked for their interesting, high quality and unique products many of which can't be bought on the high street. You also have the shops, cafes and restaurants to explore along the medieval streets of Winchester. **FYI There is no longer a direct bus service from Salisbury to Winchester. So, take this opportunity to visit this historical city with our door-to-door service.**

Adult £29.00

Child £27.00

Also pick up point (D)

Pickups start 08.15 Home around 16.30



ORGANISE "YOUR OWN" DAY OUT

We have tried to cover a wide range of destinations and interests in our brochure. However, our itinerary is not exhaustive. Should you wish to visit somewhere we are not advertising and you have 16 likeminded people we will happily quote for a bespoke day out tailored to your exact requirements.

PICK UP POINTS & TIMES

You will be contacted to arrange your pick up point and time 48hrs prior to the day of travel. Passengers living within the city limits will be picked up from and returned to their home address. This will be from their door if necessary. However we would appreciate your cooperation and ask that you wait at the end of your road to speed up the pickup process so passengers are on the bus for as little time as possible prior to reaching their destination. Please be at the pre-arranged point at least 10 minutes prior to your pick up time. If upon arriving at the pick point, you are not there, the driver will wait for 5 minutes after the pre-arranged time before pulling away. Your driver will try to contact your home or mobile phone if you have one before doing so. No refund will be given to passengers that fail to turn up or turn up after the 5 minute grace period. Nor shall the company be held responsible for the late arrival of the minibus due to circumstances outside of our control (i.e. traffic and weather conditions). Return times shown in the brochure are merely as a guide as the drop off route may take up to 45 minutes to complete.

WHEELCHAIRS & ROLLATORS

We are able to accept lightweight wheelchairs and walking rollators, subject to them being able to be folded and stowed in the vehicles luggage compartment and that they weigh no more than 20kg. Unfortunately, we do not operate wheelchair facilitated vehicles so are not able to carry disabled passengers in their chairs.

ADDITIONAL PICK UP POINTS

To make our tours more accessible to a wider audience we also have additional pick up points on route to that day's destination. They are as follows and are shown on each trip.

- A. Amesbury Main Carpark (Bus stop at the entrance of)
- B. Durrington & Larkhill (Bus stop opposite the Stonehenge Inn)
- C. Netheravon (Dog and Gun Inn car park)
- D. Winterslow (Bus stop outside the old Pheasant Hotel on the A30)
- E. Alderbury (Clarendon crossroads bus stop)
- F. Whiteparish (Brickworth corner café)
- G. Landford (Bus stop on the A36 opposite the Landford Poacher Pub)
- H. Charlton-All-Saints (Bus stop on the A338)
- I. Downton (Bus stop outside the Bull Inn)
- J. Breamore (Village Hall car park)
- K. Fordingbridge (Bus stop opposite the Surma Valley Indian Restaurant)
- L. Coombe Bissett (Bus stop outside the Fox & Goose Pub)
- M. Six Penny Handley (Bus stop past the roundabout on the A354)
- N. Wilton (Bus stop outside Wilton Garden Centre)
- O. South Newton (Bus stop opposite St Andrews Road)
- P. Steeple Langford (Bus stop before crossroads on Salisbury Road)

FOR YOUR COMFORT

We operate a strict no smoking policy in all our vehicles. The use of electronic cigarettes is NOT permitted. In consideration of your fellow passenger we ask that the use of mobile phones is restricted for emergencies only.

No pets (except guide dogs) are permitted to travel on the bus.

Where passengers consume food (fast food e.g. fish and chips and take away food not permitted) or drink on board (alcohol not permitted) we ask you to ensure that other passengers are not inconvenienced, protection is provided against spillage and litter is cleaned up afterwards.

CANCELATIONS, REFUNDS OR AMMENDMENTS

BY THE COMPANY

Should the Company be forced to cancel an excursion due to insufficient bookings, all monies paid by passengers for that particular excursion will be refunded in full. There after the company shall be exempt from any further liability. PLEASE NOTE THAT EXCURSIONS WILL NOT GO AHEAD WITH LESS THAN 10 PASSENGERS DUE TO THE COSTS INVOLVED IN OPERATING THE SERVICE.

BY THE PASSENGER

- A. Should you wish to cancel 28 days prior to the date of travel you will receive a full refund. You may nominate a substitute but any change to the pickup arrangements must be agreed by the Company.
- B. Should you wish to cancel between 21-27 days prior to the date of travel a 50% cancellation charge will apply in addition to any entrance tickets which have been prepaid by the Company.
- C. Should you wish to cancel between 14-21 days prior to the date of travel a 75% cancellation charge will apply in addition to any entrance tickets which have been prepaid by the Company.
- D. For cancellations notified to the Company within 14 days of the date of travel a 100% cancellation charge will apply in addition to any entrance tickets which have been prepaid by the Company.

GENERAL TERMS AND CONDITIONS

1. It is a legal requirement that seatbelts must be worn at all times when travelling. If you are unable to fit our seatbelts we will supply a seatbelt extension. Should this not suffice, sorry you cannot travel.
2. Where a refreshment stop is taken, no responsibility can be taken for the standard or quality or service of catering establishments. Complaints should be taken up directly with the supplier. We strongly recommend you bring along a snack.
3. We cannot take responsibility for availability or standards of conveniences at stops.
4. No responsibility can be accepted for any cancellation of any advertised trip for reasons outside our control including insufficient passengers, weather conditions and fuel shortages.
5. We will terminate a passenger's journey in the event of unsociable/unreasonable behaviour that impacts on the enjoyment of fellow passengers.
6. The company cannot be held responsible for any entrance prices quoted for your information FYI being incorrect. We research these details via the websites of the destinations we visit at the time the brochure goes to print but these prices may change by the time the trip takes place. We also ensure that on the days we visit towns and cities, there are no known events taking place that will detract from the enjoyment of your day i.e. marathons, parades or carnivals that require road closures or traffic control. However, the relevant tourist information centres are not aware of all the forthcoming years events in March when we print our brochure.
7. Complaints should be made in writing within 7 days of the excursion to our company office at 13a Windsor Road, Salisbury, Wiltshire, SP2 7DX. The company will reply within 14 days.



The **Single Solution** for your home

01722 331066 | www.sgsgas.co.uk



Heating



Boilers



Electrical



Plumbing



Bathrooms



Kitchens



Fires



Solar PV



EV Chargers



Heat Pumps



Air Con



**The Fox and Goose Blandford Road Coombe Bissett
Salisbury SP5 4LE Tel: 01722 718437
Email: foxandgoosecoombebissett@gmail.com
www: foxandgoose-coombebissett.co.uk**



Trip Advisor Certificate of Excellence winner

**A warm and friendly atmosphere where all are welcome,
even well behaved dogs get spoilt.**

Open All day

Food served from 12 noon until 9pm

Homemade Specials and Traditional Sunday Roasts

Log Fire in Winter

Large Beer Garden and Play Area in Summer

Open Music Nights on the third Thursday of each month
all welcome to come and play